

**NetTouch** is an all rounded application which is tightly integrated with Instant Messenger and collaboration features like Desktop Sharing, Remote Assistance and Whiteboard sharing. NetTouch allows end-users to make and receive calls. The capability to share data and display remote videos also bring a lively note to any conference. It is the one solution globally from wherever you are

**Most importantly**, NetTouch offers data archiving and server management capabilities which includes multimedia recording on server for each NetTouch session, iM text chat saved on server, tracking of file transfer data and record, archive usage and status information for each user, and more. These management tools are designed to be compliant with corporate policies and government regulations, such as Sarbanes Oxley, HIPAA, etc.

### NetTouch at a glance (Server Management)

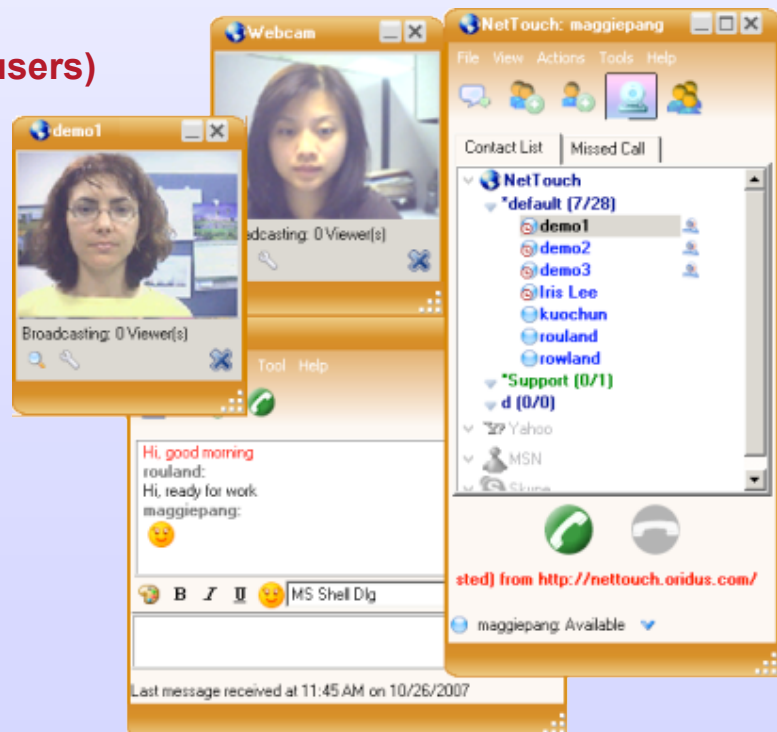
- Compliant with corporate policies, firewall setup
- Meet government regulations, such as Sarbanes Oxley, HIPAA, etc
- Users privilege control and management
- Activity log and multimedia recording for all sessions
- Central management for different IM type like Yahoo, MSN, Skype
- Configurable data backup system

### NetTouch at a glance (End-users)

- Desktop Sharing
- Remote Assistance
- Whiteboard Sharing
- Audio Video Capabilities
- Presence Awareness
- File Transfer
- Record/Replay
- Centralized iM
- Call logs and Voicemail

### Competitive Advantages

- ❖ Cross platform support
- ❖ Enterprise-wide rapid deployment
- ❖ On-premise solution
- ❖ Multi-layer security
- ❖ Management, control, security
- ❖ Specialized solution which integrates with your workflow
- ❖ Outstanding customer support



## NetTouch Server Operating System Requirement

| OS        | Intel/Redhat Linux EL3/4 | SPARC Solaris 8/9 | Windows XP/2000 (Beta) |
|-----------|--------------------------|-------------------|------------------------|
| CPU       | 2.8 GHz                  | 1 GHz             | Pentium 4@2GHz & abv   |
| Memory    | 2GB                      | 2GB               | 1 GB                   |
| Hard Disk | 100GB                    | 100GB             | 100GB                  |



## Client Program Operating System Requirement

| Platform            | Windows 2000/XP                 |
|---------------------|---------------------------------|
| CPU                 | Intel Pentium 4, 1GHz & above   |
| Memory              | 256 MB RAM & above              |
| Hard Disk           | 15MB free disk space            |
| Browser Requirement | IE5, IE6, Netscape 4.xx and 7.x |
| Network Connection  | Any Broadband connection        |

**Note:** On Windows 2000, the minimum DirectX version required is 9.0 or above.

### Monitor

Total: ( 1 - 2 of 2 )

Sort Status by clicking the icon: :0 :0 :0 :0 :0 :0 :0

Index of Sign-In Name: [A](#) [B](#) [C](#) [D](#) [E](#) [F](#) [G](#) [H](#) [I](#) [J](#) [K](#) [L](#) [M](#) [N](#) [O](#) [P](#) [Q](#) [R](#) [S](#) [T](#) [U](#) [V](#) [W](#) [X](#) [Y](#) [Z](#) ALL

| Status | Sign-In Name | Display Name | Sign-In Time     | Change Status Time |
|--------|--------------|--------------|------------------|--------------------|
|        | mpang        | mpang        | 01/17/2007 10:29 | 01/17/2007 10:29   |
|        | psc          | psc          | 01/17/2007 10:31 | 01/17/2007 10:39   |

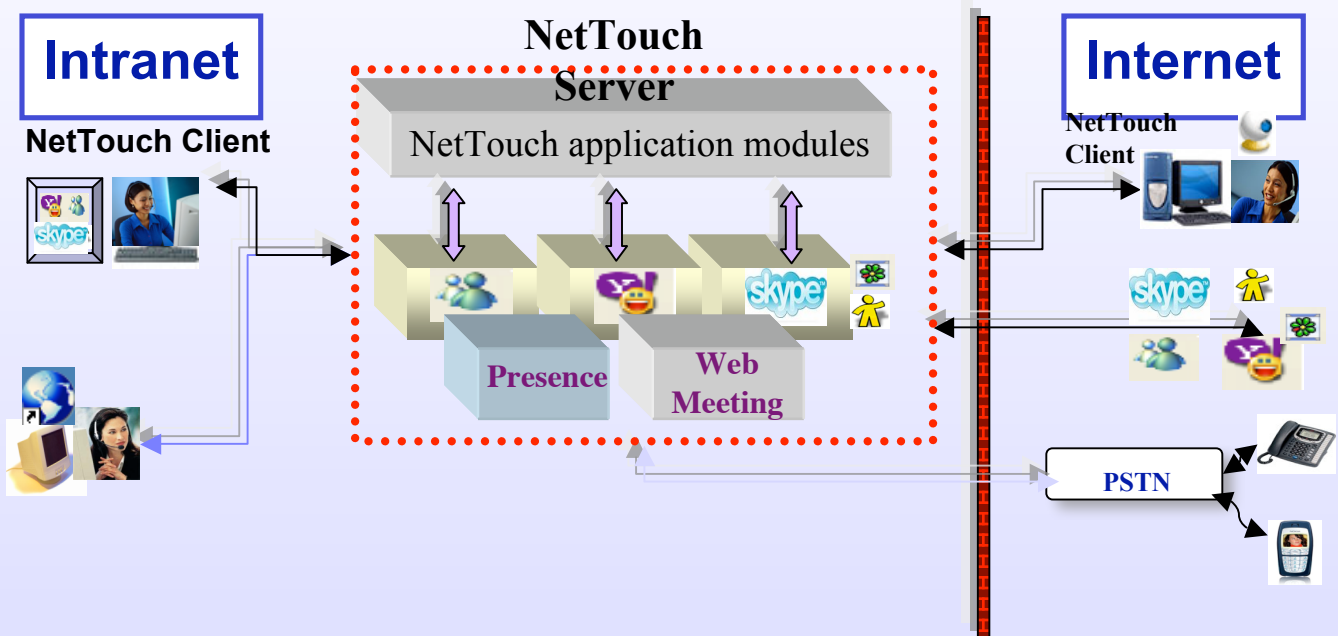
- On line** : Person who is on-line
- Busy** : Person who is busy
- Idle** : Person who is idle
- Phone** : Person who is on Phone
- Advanced Data Sharing/ Web Conference** : Person who is on the Data Sharing mode or who launches Web Conference
- Video** : Person who has the video capability
- MSN** : Person who signs in to MSN
- Yahoo** : Person who signs in to Yahoo
- Skype** : Person who signs in to Skype
- Skype Phone** : Person who is on Skype Phone

## Enterprise

Management

Security

Control



## End Users

Data Sharing

Presence

Multimedia