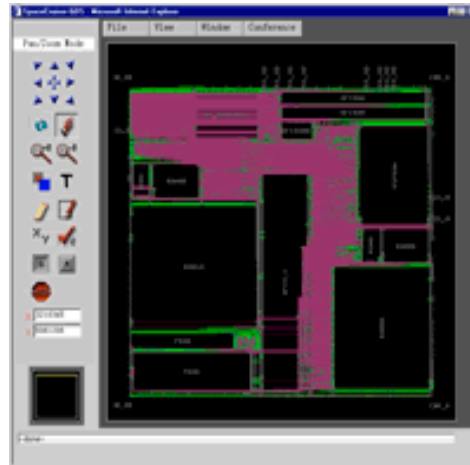


GdsCruiser™, an application in the Oridus Server system, is an interactive layout viewer. GdsCruiser allows remote access to the physical database of the mask layout design and facilitates engineering collaboration. GdsCruiser has major navigation and browsing features, reads the industry-standard mask layout interchange format GDS II and supports hierarchical mask design viewing.

After the modules have been integrated through place-and-route, layout designers or contractors can remotely review their finished blocks from the chip level perspective by accessing GdsCruiser. GdsCruiser allows members of the design team to easily view their physical design during any stage of development through any existing browsers.

Features

- Real-time graphic information (GDS II format)
- Zoom in/zoom out
- Set layer
- Set level
- Set grid
- Measure
- Markers
- Descend/Ascend
- Save tech file
- Conference mode
- Chat
- Security



Set Layer

Display layers' color and pattern information to help users review the design database.

Cells

GdsCruiser can list all the cells names.

User can review by cells.

Save Tech File

Users can save the current viewing setting to the tech file.

Descend/Ascend

Descend: Display sub-cells.

Ascend: Return to top-level cell.

Secure Architecture

- Access control: usernames and passwords protection
- Data stream security: SSL
- Firewall protected

Conference Mode

GdsCruiser facilitates real-time Web conferencing between engineer teams. The conference mode allows all parties to exchange information while browsing the same database and immediately resolve any ambiguity.